



ONE STOP SHOP

FOR TWO WHEELER GARAGE EQUIPMENT

LIFTING EQUIPMENT | WORKSHOP EQUIPMENT | WHEEL SERVICE EQUIPMENT | BODYSHOP EQUIPMENT
WASHING EQUIPMENT | N2 & AIR INFLATOR | AIR COMPRESSOR | EV TOOLS & EQUIPMENT

► LIFTING EQUIPMENT

► 2W PNEUMATIC LIFT - 180kg



► Technical Specification

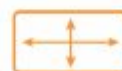
| | |
|---------------------|-------------------|
| Lifting capacity | : 180 kg |
| Lifting time | : 12 sec |
| Max. lifting height | : 765 mm |
| Min. lifting height | : 250 mm |
| Platform size (LxW) | : 2000x700 mm |
| Safety mechanism | : Mechanical lock |

► Advanced Features

- Suitable for all Two Wheeler repairs
- Easy to mount and dismount two wheelers
- Rugged and durable



Lifting Capacity
180 kg



Platform Size
2000x700mm



Locking Mechanism
Mechanical Lock

► 2W HYDRAULIC LIFT - 250kg



► Technical Specification

| | |
|---------------------|-------------------|
| Lifting capacity | : 250 kg |
| Lifting time | : 15 sec |
| Max. lifting height | : 900 mm |
| Min. lifting height | : 200 mm |
| Platform size (LxW) | : 2000x600 mm |
| Safety mechanism | : Mechanical lock |

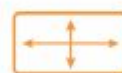
► Advanced Features

- Zero Maintenance
- 3 stage safety Lock Self lubricator roller bushes for zero maintenance

*Optional: Foot Operated Lift also available



Lifting Capacity
250 kg



Platform Size
2000x600mm



Locking Mechanism
Mechanical Lock



Foot Operated Pump

► LIFTING EQUIPMENT

► 2W HYDRAULIC LIFT - 400kg



Higher Capacity
Wider Platform
Faster ROI

► Technical Specification

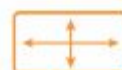
| | |
|---------------------|-------------------|
| Lifting capacity | : 400 kg |
| Lifting time | : 20 sec |
| Max. lifting height | : 900 mm |
| Min. lifting height | : 200 mm |
| Platform size (LxW) | : 2250x750 mm |
| Safety mechanism | : Mechanical lock |

► Advanced Features

- Zero Maintenance
- 3 stage safety lock mechanism
- Wide platform with SS / MS top sheet
- Self-lubricating roller bushes
- Wheel service ramp included



Lifting Capacity
400 kg



Platform Size
2250x750mm



Locking Mechanism
Mechanical Lock

► POWER PACK



► Technical Specification

| | |
|-------------------|-------------------------|
| Motor | : 1ph, 230 V, 1 hp |
| Oil tank capacity | : 25 L |
| Operating mode | : Up / Down push button |

► Advanced Features

- Up to 8 lifts operation by single power pack

► 2W LIFT ACCESSORIES



Paddock Stand



Front Wheel Lock



Front Wheel Lock

WORKSHOP EQUIPMENT

TOOLS TROLLEY



Advanced Features

- Sturdy Structure
- Easily maneuverable trolley with caster wheels
- Tool inserts for quick hand tool retrieval

AIR FILTER & CHAIN CLEANER STAND



Air Filter Cleaner Stand

Chain Cleaner Stand

Advanced Features

- Solid and long-lasting structure fabricated with stainless steel tubes and sheets

INTEGRATED WORKSTATION



Storage Cabinet

Parts Storage

Tools Trolley

Advanced Features

- Integrated workstation with storage cabinet, parts storage & tool trolley

PARTS TROLLEY



Advanced Features

- Designed for easy access and mobility
- Ergonomically designed to reduce operator fatigue

SIDE TABLE



Advanced Features

- Built-in storage spaces for wheel and silencer
- Designed to organize and store various types of fasteners

*THE ABOVE MENTIONED PRODUCT'S DIMENSION CAN BE CUSTOMIZED BASED ON REQUIREMENTS

▶ DIAGNOSTIC & ALLIED EQUIPMENT

▶ BATTERY CHARGER & TROLLEY



▶ Technical Specification

Charging Mode : Initial & Normal
 Charging Current : 2 A & 4 A (Selectable)
 Output Voltage : 12 V to 24 V (Selectable)
 Current Selection : 2 A (Below 5 Ah)



▶ Advanced Features

- Designed for easy access and mobility
- Easily maneuverable trolley with caster wheels

▶ SPARK PLUG TESTER & CLEANER



Before After

▶ Advanced Features

- Spark plug cleaning with sand blasting- system which does not interfere with automobile combustion
- In-built tester & cleaner in single unit
- High working pressure and easily suitable

▶ Technical Specification

Working pressure : 5-12 kg/cm²
 Spark plug model : 10/14/18
 Ignition coil : 17 kv
 Weight : 7 kg
 Power : 230 W

▶ PNEUMATIC TOOLS



▶ Technical Specification

Bolt capacity : 14 mm
 Working torque : 50-320 Nm
 Max. torque : 352 Nm
 Weight : 1.2 kg

▶ Technical Specification

Bolt capacity : 10 mm
 Free speed : 175 rpm
 Max. torque : 68 Nm
 Weight : 1.2 kg

▶ Advanced Features

- Compact & Lightweight
- It is designed to achieve the best possible balance in hand, ensuring a secure hold for optimum nut and bolt work
- Easy to handle

▶ HAND TOOLS



Mechanical Tool Kit is a consists of wide range of spanners (DE & Ring), Screw Drivers, Hammers & sq. sockets etc.,

▶ PNEUMATIC HANGER



▶ Advanced Features

- Very simple yet sturdy structure
- Double hose reel to enable two pneumatic guns to operate at a time
- Additional span to service two motorcycles side by side

WHEEL SERVICE & ALLIED EQUIPMENT

2W WHEEL BALANCER - Motorized



Technical Specification

| | |
|-------------------|----------------|
| Rim diameter | : 10" - 24" |
| Max. wheel weight | : 65 kg |
| Max. wheel dia. | : 1188 mm |
| Rim width | : 1.5" - 20" |
| Precision | : ± 1 g |
| Motor Power | : 0.25 kW |
| Power supply | : 100/230V 1ph |
| Rotation per min | : 200 rpm |
| Balancing time | : 10 sec |

Equipped with:

12mm Shaft

Optional :

10mm & 14 mm Shaft



Advanced Features

- The balancer has DYN/STA and different ALU balancing programs, this balancer has motorcycle balancing program
- The calibration is easy to proceed, the machine can quickly get back its precision
- The IMD display panel is resistant to scratch and erosion

TYRE CHANGER - Motorcycle



Technical Specification

| | |
|------------------------|-------------|
| Outside clamping range | : 6" - 24" |
| Inside clamping range | : 3" - 12" |
| Max. wheel dia. | : 960 mm |
| Working pressure | : 8-10 bar |
| Bead breaking force | : 2500 kg |
| Powers supply | : 220V |
| Power | : 0.75kW |
| Rotation per minute | : 6.5/13rpm |
| Noise | : < 70dB |

Advanced Features

- Demounting head is made of special material - steel forging
- Drawer type pedal assembly - easy to disassembled and assemble for servicing the tyre changer
- The bead breaker system is compact design to make operation more easier

INFLATOR - Nitrogen & Air



Technical Specification

| | |
|----------------------|--------------------|
| Model | ECO Wall Mount |
| Operating pressure | : 0-180 psi |
| Pressure setting | : 7-174 psi |
| Measuring resolution | : 0.5 psi |
| Input air supply | : 10-12 bar |
| Operating voltage | : 1 Ph, 230V, 50Hz |

Nitrogen Inflater
NitroFill

Technical Specification

| | |
|----------------------------|-------------------------|
| Model | NitroFill |
| Recommended input pressure | : 7 kg/cm ² |
| Purity of Nitrogen | : 95-99 % |
| Storage tank size | : 60 Ltrs |
| N2 generating capacity | : 3500 LPH |
| Output pressure | : 10 kg/cm ² |
| Operating voltage | : 1 Ph, 230V, 50Hz |

AIR COMPRESSOR - Reciprocating



Technical Specification

| | | |
|-----------------------|--------------------|------------------|
| Model | ATS 03 RD 16 | ATS 05 RD 22 |
| Motor power | : 3.0 hp/2.2 kW | 5.0 hp/3.7 kW |
| Compressor speed | : 925 rpm | 925 rpm |
| Max. working pressure | : 12.0 bar/175 psi | 12.0 bar/175 psi |
| Free air delivery | : 261 lpm/9.2 cfm | 439 lpm/15.5 cfm |
| Air receiver | : 160 Ltrs | 220 Ltrs |

Advanced Features

- Low operational speed using high efficient IE2 6 pole motor
- Unique integrated drive with compact top block design
- Low Noise Level & Larger Aluminum inter & after coolers aiding 32% more heat transfer area

*2hp with 1 Ph also available

► BODYSHOP EQUIPMENT

► 2W PAINTING STATION



COMPACT
DESIGN



ECO
FRIENDLY



EASY
MAINTENANCE



SIMPLE
CONSTRUCTION



HIGH
DURABILITY

► Technical Specification

| | |
|-----------------------|--|
| Type | : Open face, cross draft airflow |
| Overall size (LxWxH) | : 2500x2820x2374 mm |
| Internal size (LxWxH) | : 1800x2700x2100 mm |
| Filter type | : Paint arrester |
| Filter arrangement | : 2 rows x 2 columns |
| LED lights | : 4 Nos. |
| Exhaust blower | : Direct drive centrifugal backward inclined |
| Blowers | : 2 Nos. |
| Air flow | : ≥ 3700 cmh |
| Power supply | : 3 Ph, 415 V, 50 Hz |

► Advanced Features

- Dry arresting of paint without water and chemicals
- Over sprayed paint is absorbed by the blower through synthetic fiber glass filter
- Dynamically balanced Impeller Fan
- High Quality Filters, Easy to Replace
- Effective extraction system
- Releases clean air output to the atmosphere
- Ease of operation
- Ideal use for all type of paint applications

► 2W BAKING STATION



QUICK DRYING
PROCESS



LOW
ENERGY COST



HIGH QUALITY
FINISH



INCREASED
PRODUCTIVITY



USER
FRIENDLY



► Technical Specification

| | |
|-----------------------|--|
| Type | : Open face with curtains |
| Overall size (LxWxH) | : 1860x2840x2626 mm |
| Internal size (LxWxH) | : 1800x2700x2100 mm |
| Infra Red cassettes | : 4 Nos. |
| Infra Red lamp | : 12 (3 Lamps per cassettes) |
| Exhaust blower | : Direct drive centrifugal backward inclined |
| Air flow | : ≥ 2000 cmh |
| Power supply | : 3 Ph, 415 V, 50 Hz |

► Advanced Features

- Compact and simple installations
- Eco-Friendly and Non - Polluting
- The drying effect appears immediately after turning on the infrared emitters
- The equipment works without inertia - immediately after switching on it is ready to work

▶ WASHING EQUIPMENT

▶ 2W WASHER



HL 03 045
(New Gen TPP)



P 12/28



P 36/30

Trigger Gun

▶ Technical Specification

| Model | HL 03 045 | P12/28 | P 36/30 |
|---|------------|----------|----------|
| Displacement, lpm | : 17 | 11.5 | 17.5 |
| Delivery per gun, lpm | : 17 | 11 | 17 |
| No. of guns | : 1 | 1 | 1 |
| No. of plungers | : 3 | 3 | 3 |
| Operating pressure, kgf/cm ² | : 45 | 18 | 45 |
| Motor power, hp | : 3 | 1 | 2.5 |
| Pump speed, rpm | : 1440 | 470 | 340 |
| Type of mounting | : Base | Base | Base |
| Suction type | : Positive | Negative | Negative |

▶ Advanced Features

- Direct driven
- Low maintenance cost
- Positive suction pump
- Jet/Spray options for engine compartment wash
- Trigger gun to reduce impact pressure at different application

▶ HIGH PRESSURE WASHER - POWER WASH



Cage Model



Trolley Model

▶ Technical Specification

| Model | CAGE | TROLLEY |
|--------------------------------|------------------|----------------|
| Max. operating pressure, bar | : 115 | 115 |
| Flow rate, lpm | : 9 | 9 |
| Power supply | : 3ph, 415 V, 50 | 3ph, 415 V, 50 |
| Total connected load, hp | : 3 | 3 |
| Working temperature, °C | : 5 to 45 | 5 to 45 |
| Length of output hose, m | : 12 | 12 |
| Type of gun | : Trigger Gun | Trigger Gun |
| On/off switch | : Available | Available |
| Trigger gun controlled pump | : Available | Available |
| Overall dimensions (LxWxH), mm | : 860x545x490 | 950x630x1060 |
| Approximate weight, kg | : 65 | 70 |

▶ Advanced Features

- Low water consumption
- Designed for continuous running
- High pressure ensures heavy dirt cleaning
- Reduce operator fatigue with trigger controlled mechanism
- Low pressure mode for engine area cleaning
- Trolley model enables easy maneuverability

▶ WASHING EQUIPMENT

▶ 2W WASHING LIFT - SMART WASH DUO



▶ Technical Specification

| | |
|---------------------------|----------------------|
| Lifting capacity | : 1000 kg |
| Max. lifting height | : 815 mm |
| Min. shut height | : 200 mm |
| Overall dimension (LxWxH) | : 2800x1410x200 mm |
| Lift color | : Hot dip galvanized |
| Safety mechanism | : Mechanical lock |
| Power supply | : 3 HP/2.2kW, 3 Ph |

▶ Advanced Features

- Only one man power required for complete operation
- Reduced operation time & operator fatigue
- Efficient utilization of water
- 360° access to all parts
- Improved productivity
- Minimum maintenance



WASHING OF THE
VEHICLES SIMULTANEOUSLY



RUST-FREE GALVANIZED
STRUCTURE



EFFORTLESS LOADING &
UNLOADING OF VEHICLE



NO CIVIL WORK
REQUIRED



CAN BE INSTALLED IN
MULTI-STORYED WORKSHOP

▶ 2W WASHING LIFT - SMART WASH TURBO



▶ Technical Specification

| | |
|--------------------------------------|----------------------|
| Max. washable bike size (LxWxH) | : 2210x1360x890 mm |
| Max. water consumption per bike | : 45 Litre |
| Max. Shampoo consumption per bike | : 20 ml |
| Cycle time per bike (without wiping) | : 52 sec. |
| Gun for wheel arch cleaning | : 1 No. |
| Power supply | : 3 Ph, 415 V, 50 Hz |
| Power requirement | : 7.5 hp |
| Space required (LxWxH) | : 4100x1450x2050 mm |

▶ Advanced Features

- Integrated under chassis wash
- Galvanized steel structure
- Front wheel lock system
- Latest & elegant dual tone design
- Separate gun for wheel arch cleaning



LESS WATER
CONSUMPTION



GENTLE AND
SAFE



SUPERIOR WASH
QUALITY



LESS
MAN POWER



NO CIVIL WORK
REQUIRED

▶ WATER TREATMENT & RECYCLING EQUIPMENT

▶ 2W EFFLUENT TREATMENT PLANT



▶ Technical Specification

| | |
|------------------------|--|
| Flow rate | : 1000 lpm |
| Suction tubing | : 4/6 mm |
| Discharge tubing | : 4/6 mm |
| Dosing rate | : 6 mph @ 4 kg/cm ² |
| Strokes / minute | : Max:400 Min:50 |
| Fuse | : 600 mA |
| Level switch interlock | : Normally open |
| Relay output | : Normally open. Closes in case pump stop for any reason |
| Power supply | : 1 Ph, 230 V, 50 Hz |



COMPACT UNIT



PLUG & PLAY OPERATION



USER FRIENDLY



NO MAJOR CIVIL WORK REQUIRED



MAINTAINS STATUTORY NORMS

▶ 2W WATER RECYCLING PLANT



▶ Technical Specification

| | |
|-------------------------------|-----------------------|
| Waste water handling capacity | : 1000 lph |
| Media filter | : FRF filter media |
| Sludge handling system | : Sludge bag holder |
| System dimension | : 4x3x4 m |
| Filter dimension | : 1.55x0.6x1.6 m |
| Sludge bag frame dimension | : 1.85x0.55x0.9 m |
| Power supply | : 2.5kW, 230 V, 50 Hz |

▶ Advanced Features

- Exclusively designed for handling vehicle wash waste water
- Faster sludge settling technique
- Less volume of sludge generation
- Automatic dosing method, no need of dedicated manpower
- Automatic disposal of sludge from main equipment
- Automatic sensing of dry run to safeguard the recycling plant
- Clear recycled water
- Up to 100% water recovery
- Zero waste water disposal charges
- Limitless recycling & fully automatic



COMPACT FOOTPRINT



LIMITLESS RECYCLING



100% WATER RECOVERY



CLEAR RECYCLED WATER

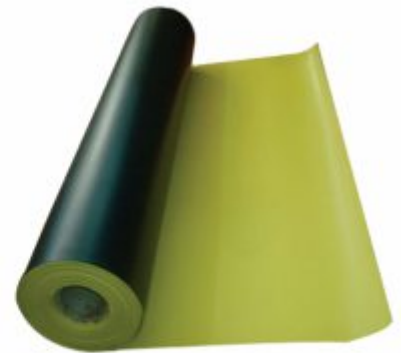
ELECTRIC VEHICLE SERVICE EQUIPMENT

INSULATED PERSONAL PROTECTIVE EQUIPMENT KIT



Honeywell

PPE KIT



Technical Specification

Product Range : Full Work Wear, Helmet, Rubber Matt
Safety Shoes & Hand Gloves
Compliance Standard : IEC EN 60903:2014 Certified
Compatible Range : Max. 1000 V AC / 1500 V DC

INSULATED MEASURING INSTRUMENTS



Technical Specification

Model : HV Insulation Resistance Tester
Insulation Test Range : 0.01 M Ω - 10 G Ω
Various voltages, such as 50 V, 100 V,
250 V, 500 V & 1000 V can be measured

Model : Special HV Tester
Voltage Range : Max. 1000 V AC, 1500 V DC
Resistance Range : 10 K Ω - 1999 K Ω
Compliance Standard : IEC 61557; 61557-1:2007; 61557-2:2007;
61557-4:2007

INSULATED HAND TOOLS



Technical Specification

Tools Range : Spanners, Combination Pliers, Screw Drivers,
Socket Sets & Torque Wrenches
Compliance Standard : IEC EN 60900 Certified
Compatible Range : Max. 1000 V AC / 1500 V DC

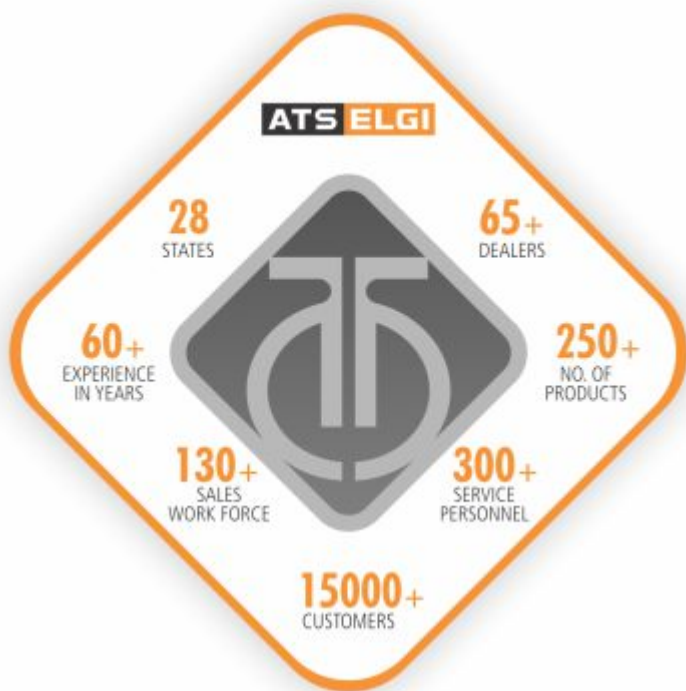
About ATS ELGI

EMPOWERING THE AUTOMOTIVE SERVICE INDUSTRY FOR MORE THAN 6 DECADES

ATS ELGI is the largest manufacturer and distributor of Automotive Service Equipment in India. With our "One Stop Shop" approach, we offer the widest range of garage equipment in the country. Working closely with Authorised OEM workshops and Private Garages compliments our profound understanding of the vehicle servicing business since 1960.

ATS ELGI is a wholly owned subsidiary of **ELGI** Equipments Limited, a Global Player in the air compressor business.

OUR STRENGTH



OUR NETWORK



*due to continuous product improvement, specifications and design are subject to change without prior notice

ATS ELGI

Private Industrial Estate, Kurichy,
Coimbatore - 641021, Tamil Nadu, India.
Visit us at : www.ats-elgi.com | Email : enquiry@ats-elgi.com

Toll Free Number : **1800-203-3544**

Follow us on : [in](#) [f](#) [ig](#) [yt](#) [x](#)

ATS ELGI authorized dealer