

# EG SERIES

Oil-Injected Rotary Screw  
Air Compressors

The Technological Edge  
To Power Your Business

11 – 250 kW / 15 – 300 HP (50/60 Hz)

**ELGI**<sup>®</sup>  
Always Better.



# EG SERIES

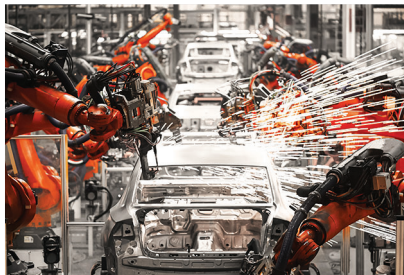
**Superior Energy Efficiency | Low Total Cost Of Ownership  
Industry Leading Warranty | Best-In-Class Reliability**

## Power consumption on your mind?

Around the world, changes are being made in the way businesses are powered, and in general, the way compressed air is used as a power in everyday life. These changes have implications for companies, governments, and individuals in the future.

Automotive, Chemical, Food and Beverage, Fast Moving Consumer Goods, Cement, Packaging, Pharmaceuticals, Textile, Ceramics industries and workshops rely heavily on compressed air. These industries fuel the world's economy.

## Applications



Automotive



Food and Beverage



Cement



Packaging



Mining



Agriculture



Textile



Ceramic



Manufacturing



## EG SERIES

THE ECO-FRIENDLY ENERGY-EFFICIENT COMPRESSOR



With high energy costs, revised regulatory and sustainability goals, and increasing competition, it is a continuous challenge for plant managers to reduce costs, achieve high productivity and improve energy efficiency.

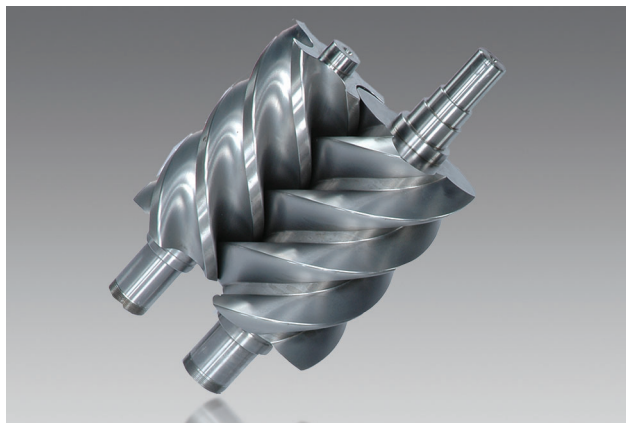
For industries using air compressors for day-to-day operations, the energy cost has become a top concern. ELGi's screw compressors are engineered to be energy efficient and environmentally friendly to minimise energy costs for customers.

The airend's screw elements are manufactured in-house using state-of-the-art machining centres. ELGi is one of the few companies capable of design and manufacturing a wide range of oil lubricated and oil free airends.

ELGi's patent portfolio is a testament to the company's continuous research and innovation capabilities.



## Features and Benefits



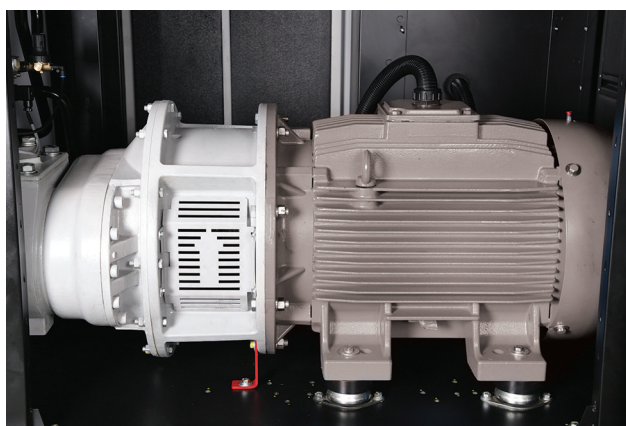
### Highly Efficient Airends Superior Energy Savings

ELGi's unique airends are equipped with in-house developed  $\eta$ -V profile rotors, with 4/5 lobe combination. The rotors are designed to run at low speeds to increase efficiency and life. The unique airend supplies compressed air for all demanding applications while ensuring minimal impact on the environment. The 2 stage airends in the 90-110SP machines take the efficiency numbers to the next level and make them best-in-class.



### Advanced Package Design Functional and Aesthetic

The package is configured with subsystems that are designed to minimize system losses and maximize energy savings. The special design of the compressor and its door panels allows easy serviceability and the aesthetically built acoustic enclosure keeps noise levels in check.



### Motors Reliable and Efficient

The motors with a larger core and increased windings provide better thermal management. Additional fins on the face of the motor with the lowest air block over the frame provide better reliability. The four/six pole motors offer better efficiency than other motors.

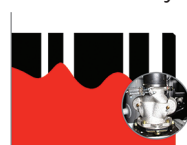
\* Available in IE4/IE5+ efficiency configurations for select models.



### Intake Valve System Reduced Starting Load

The new generation intake valve with an integrated blow-down unit, solenoid control, and actuator, is designed for high efficiency. Modulation unit\* provides savings of upto 20% of total power consumption at 60% flow.

Load/unload System



Suction Modulation System



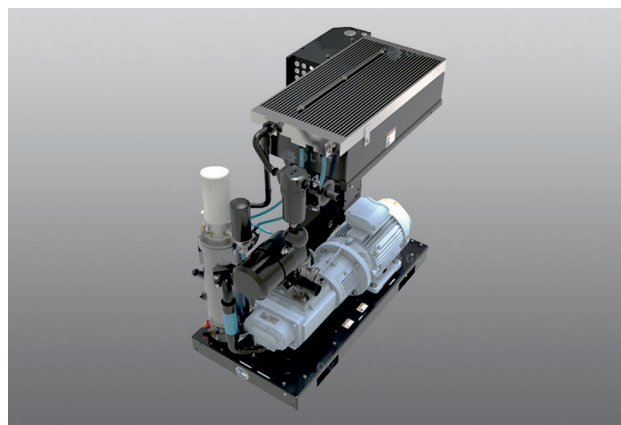
■ Actual Air Demand ■ Compressor Air Delivery

\*Available for models from 55kW and above



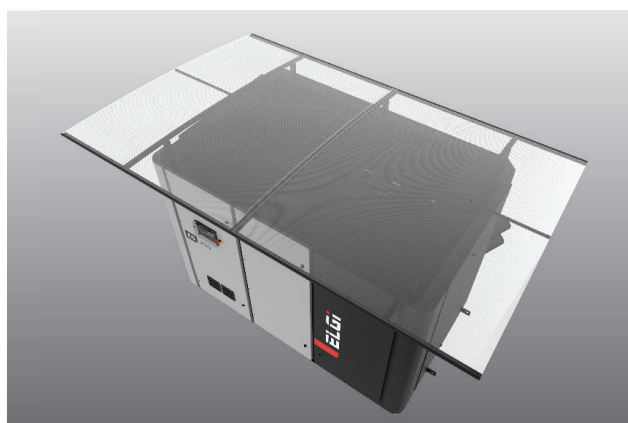
**Low Oil Carry Over (< 1ppm)**  
Superior Quality of Air

ELGi has developed a unique OSBIC process (Oil Separation by Impact and Centrifugal action) to separate air and oil with minimum pressure drop. This process involves removing oil in three stages, delivering consistent low oil carryover. This efficient method also increases the life of the air-oil separation filter.



**Efficient Cooling System**  
Extended Life and Cool Air

The cooling system with optimal fans and a large cooler surface area offers superior cooling performance. The integrated fan motor uses significantly low power and maintains an optimal temperature range of oil, thereby increasing the life of the parts. This smart cooling system keeps the discharged compressed air temperature low easing the load on the downstream equipment.



**Reliability Under Extreme Conditions**  
Robust and Reliable

The EG Series compressors are robust and reliable. They are designed to perform at extreme temperatures - from cold to hot and from dry to extremely humid conditions with design temperatures up to 50° c (115 degree F for Americas).

Optional outdoor protection\* and low ambient models are available\*

\*For select regions



**Custom-Designed Moisture Separator**  
Longer Life of End-Use Equipment

The EG Series air compressor has a custom-designed centrifugal type moisture separator with an automatic drain that comes as a part of the package at no extra cost. The custom-designed separator removes over 99% of bulk water from the compressed air, resulting in a corrosion-free, longer life of end-use equipment and reducing the load on the dryer.



### Safety and Protection

EG Series compressors are designed to ensure the highest level of safety.

**High-pressure trip | High-temperature trip | Pressure relief valve | Low voltage trip | Single phase preventer | Reverse rotation prevention.**



### Best-In-Class Warranty

Superior warranty of upto 10 years on the airend\* and package warranty of 5 years\* irrespective of operating hours.

\*In select regions; contact your local ELGi representative for further details; T&C Apply.

## EG Series

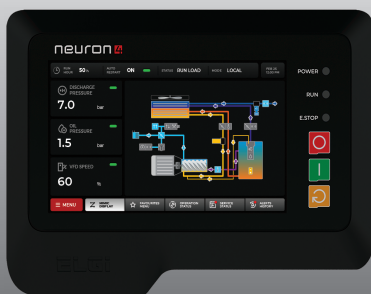
The Technological Edge to Power Your Business



- **Two-Stage Air Filtration**  
Increased Life of Consumables
- **Ease Of Maintenance**  
Ease of Access to Components with Removable Panels
- **Neuron 4 Controller**  
Advanced, Intelligent Controller for Safety and Reliability
- **Energy-Efficient**  
Eco-Friendly Compressors
- **Robust Cooling System**  
Reduced Air outlet and Oil Temperature

- **Silent and Aesthetic**  
Enclosure Designed to Industrial Standards
- **Excellent Oil Separation OSBIC**  
1 PPM Oil Carry Over
- **Optional Built-in VFD**  
Compact and Saves Floor Area
- **Safety Compliant Package**  
CE Certified
- **Highly Efficient Motor\***  
Energy Savings with IE4  
Efficiency beyond regulation IE5+

## Neuron 4 Advanced Controller



### Reports

Neuron 4 is everything that you will need for a superior and reliable compressor operation. The industrial-grade, 7" touchscreen user interface offers a seamless experience in setting the compressor operational parameters. The Neuron 4 with advanced processor and hardware enables:

- Sequencing of up to 8 compressors
- Pressure schedulers to optimize compressor performance
- An array of communication options and protocols with Ethernet, RS485, Bluetooth protocols, CAN, TCP/IP, MODBUS
- Industry 4.0 compatible with optional Air~Alert (IoT) and OPC-UA communication protocol
- Multi lingual with support up to 32 languages
- Mimic display
- Reverse rotation prevention.



### Save Energy with Heat Recovery System

ELGi's Heat Recovery System is an accessory that can be added to the EG Series compressor. The Heat Recovery System can recover up to 76% of the waste heat generated during the compression process which can then in turn be used to heat water.



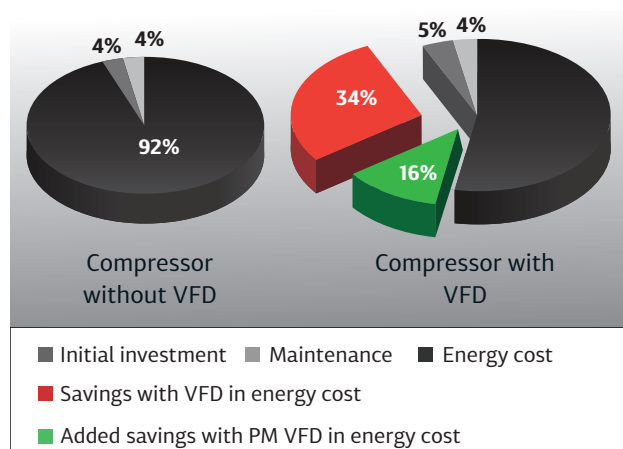
### Save Energy with optional VFD

The In-built ELGi Variable Frequency Drives (VFD) matches the compressor output with the demand by varying motor speed which reduces the power consumption and subsequently results in savings.

The VFD helps in eliminating frequent load-unload cycles. In a fixed speed compressor with a Star-Delta starter, the starting current is as high as three times the full load current (FLC). With ELGi VFD, the starting current is less than the FLC.

#### Advantages:

- Energy savings
- Improved power factor
- Low starting current and hence reduced maximum demand
- Reduced maintenance
- High efficiency combined efficiency drive system



#### Power Saving with VFD System





## Technical Specifications - 50Hz Fixed Speed

Model	Motor Power		Working Pressure		Free Air Delivery		Weight		Noise	Dimensions L x B x H
	50Hz	kW	hp	bar g	psi g	m <sup>3</sup> /min	cfm	lbs	kg	dB(A)
EG 11	11	15	7.0	102	2.01	71	1301	590	69	1356 x 721 x 1370
			8.0	116	1.81	64				
			9.5	138	1.64	58				
			12.5	181	1.39	49				
EG 15	15	20	7.0	102	2.78	98	1389	630	69	1356 x 721 x 1370
			8.0	116	2.63	93				
			9.5	138	2.27	80				
			12.5	181	1.98	70				
EG 18	18	25	7.0	102	3.40	120	1587	720	69	1500 x 821 x 1370
			8.0	116	3.23	114				
			9.5	138	2.83	100				
			12.5	181	2.32	82				
EG 22	22	30	7.0	102	4.02	142	1587	720	69	1500 x 821 x 1370
			8.0	116	3.91	138				
			9.5	138	3.34	118				
			12.5	181	2.75	97				
EG 26	26	35	4.5	65	5.15	182	2599	1179	69	1705 x 1111 x 1500
			7.0	102	5.01	177				
			8.0	116	4.47	158				
			9.5	138	4.16	147				
			12.5	181	3.43	121				
EG 30	30	40	4.5	65	5.95	210	2599	1179	69	1705 x 1111 x 1500
			7.0	102	5.83	206				
			8.0	116	5.18	183				
			9.5	138	4.87	172				
			12.5	181	4.05	143				
EG 37	37	50	4.5	65	7.28	257	2778	1260	69	1705 x 1111 x 1500
			7.0	102	7.22	255				
			8.0	116	6.65	235				
			9.5	138	5.97	211				
			12.5	181	5.24	185				
EG 45	45	60	4.5	65	8.86	313	2791	1266	69	1705 x 1111 x 1500
			7.0	102	8.75	309				
			8.0	116	7.99	282				
			9.5	138	7.39	261				
			12.5	181	6.23	220				
EG 55	55	75	4.5	65	10.90	385	3743	1698	69	1959 x 1266 x 1754
			7.0	102	10.76	380				
			8.0	116	10.11	357				
			9.5	138	9.29	328				
			12.5	181	7.59	268				
EG 75	75	100	4.5	65	14.98	529	4387	1990	69	2065 x 1355 x 1970
			7.0	102	14.95	528				
			8.0	116	14.02	495				
			9.5	138	12.86	454				
			12.5	181	11.19	395				
EG 90	90	125	4.5	65	19.9	706	6834	3100	75	2830 x 1640 x 2125
			7.0	102	16.6	585	5952	2700		
			8.0	116	15.2	538				
			10.0	145	13.3	470				
EG 90P	90	125	4.5	65	17.27	610	6570	2980	76	2916 x 1884 x 1925
			7	102	17.05	602				
			8	116	15.66	553				
			9.5	138	13.45	475				
			12.5	181	11.86	419				
EG 90SP	90	125	7.0	102	17.84	630	6872	3117	76	2916 x 1884 x 1925
			8.0	116	17.13	605				
			10.0	145	14.87	525				
			12.5	181	12.01	424				



## Technical Specifications - 50Hz Fixed Speed

Model	Motor Power		Working Pressure		Free Air Delivery		Weight		Noise	Dimensions L x B x H
	50Hz	kW	hp	bar g	psi g	m <sup>3</sup> /min	cfm	lbs		
EG 110	110	150	4.5	65	24.3	858	7496	3400	75	2830 x 1640 x 2125
			7.0	102	19.8	706	6834	3100		
			8.0	116	18.4	649				
			10.0	145	16.4	580				
EG 110P	110	150	4.5	65	22.09	780	7055	3200	76	2916 x 1884 x 1925
			7	102	21.55	761				
			8	116	20.50	724				
			9.5	138	17.50	618				
EG 110SP	110	150	7.0	102	21.66	765	7467	3387	76	2916 x 1884 x 1925
			8.0	116	20.61	728				
			10.0	145	17.58	621				
			12.5	181	14.62	516				
EG 132	132	175	4.5	65	29.1	1030	8157	3700	75	2830 x 1640 x 2125
			7.0	102	24.2	855	7496	3400		
			8.0	116	22.4	791				
			10.0	145	20.1	710				
EG 132P	132	175	4.5	65	26.76	945	8752	3970	76	2916 x 1884 x 1925
			7	102	26.51	936				
			8	116	24.35	860				
			9.5	138	21.52	760				
EG 160	160	200	7.0	102	29.1	1026	8157	3700	75	2830 x 1640 x 2125
			8.0	116	27.0	954				
			10.0	145	24.05	850				
EG 160P	160	200	4.5	65	31.15	1100	9105	4130	76	2916 x 1884 x 1925
			7	102	30.81	1088				
			8	116	28.77	1016				
			9.5	138	25.71	908				
EG 200	200	250	4.5	65	38.51	1360	11673	5295	78	3490 x 2251 x 2441
			7.0	102	37.94	1340				
			8.0	116	34.48	1218				
			9.5	138	31.15	1100				
EG 250	250	300	4.5	65	43.60	1540	12467	5655	78	3490 x 2251 x 2441
			7.0	102	43.18	1525				
			8.0	116	41.77	1475				
			9.5	138	37.88	1320				
			12.5	181	31.15	1100				

**Note:**

1. Free Air Delivery (FAD) is tested as per ISO 1217 : 2009 Annexure 'C' Edition: 4 for Fixed Speed Machines and as per Annexure 'E' Edition: 4 for VFD machines.
2. Sound level measured as per ISO 2151, Second Edition.
3. All standard models are air-cooled, please reach out to our local sales representative for water cooled options.
4. Due to continuous improvements, the specifications are subject to change without prior notice.

## Technical Specifications - 50Hz Variable Speed

Model	Motor Power		Working Pressure		Free Air Delivery		Weight		Noise	Dimensions L x B x H
	50Hz	kW	hp	bar g	psi g	m <sup>3</sup> /min	cfm	lbs		
EG 11PM	11	15	7	102	0.48-2.12	17-75	1283	582	69	1356 x 721 x 1370
			8	116	0.48-1.98	17-70				
			9.5	138	0.48-1.87	17-66				
			12.5	181	0.48-1.36	17-48				
EG15 PM	15	20	7	102	0.48-2.63	17-93	1283	582	69	1356 x 721 x 1370
			8	116	0.48-2.44	17-86				
			9.5	138	0.48-2.21	17-78				
			12.5	181	0.48-1.84	17-65				

## Technical Specifications - 50Hz Variable Speed

Model	Motor Power		Working Pressure		Free Air Delivery		Weight		Noise dB(A)	Dimensions L x B x H mm
	50Hz	kW	hp	bar g	psi g	m <sup>3</sup> /min	cfm	lbs		
EG18 PM	18	25	7	102	0.85~3.96	30~140	1477	670	69	1500 x 821 x 1370
			8	116	0.85~3.68	30~130				
			9.5	138	0.85~2.78	30~98				
			12.5	181	0.85~2.38	30~84				
EG22 PM	22	30	7	102	0.85~4.33	30~153	1477	670	69	1500 x 821 x 1370
			8	116	0.85~3.96	30~140				
			9.5	138	0.85~3.43	30~121				
			12.5	181	0.85~2.8	30~99				
EG30 PM	30	40	7	102	0.85~5.66	30~200	2401	1089	69	1705 x 1111 x 1570
			8	116	0.85~5.24	30~185				
			9.5	138	0.85~4.5	30~159				
			12.5	181	0.85~3.72	30~131				
EG30x PM	30	40	7	102	1.7~6.2	60~219	2501	1135	69	1705 x 1111 x 1570
			8	116	1.7~5.47	60~193				
			9.5	138	1.7~5.15	60~182				
			12.5	181	1.7~4.19	60~148				
EG37 PM	37	50	7	102	1.7~7.93	60~280	2501	1135	69	1705 x 1111 x 1570
			8	116	1.7~7.5	60~265				
			9.5	138	1.7~6.14	60~217				
			12.5	181	1.7~5.3	60~187				
EG45 PM	45	60	7	102	1.7~8.78	60~310	2501	1135	69	1705 x 1111 x 1570
			8	116	1.7~8.21	60~290				
			9.5	138	1.7~7.48	60~264				
			12.5	181	1.7~6.29	60~222				
EG 55	55	75	4.5	65	2.55 ~ 10.90	90 ~ 385	3887	1763	69	1959 x 1266 x 1754
			7.0	102	2.58 ~ 10.76	91 ~ 380				
			8.0	116	2.55 ~ 10.11	90 ~ 357				
			9.5	138	2.55 ~ 9.29	90 ~ 328				
			12.5	181	3.37 ~ 7.59	119 ~ 268				
EG 75	75	100	4.5	65	2.3~14.98	81~529	4497	2040	69	2065 x 1355 x 1970
			7	102	2.3~14.95	81~528				
			8	116	2.13~14.02	75~495				
			9.5	138	2.7~12.86	95~454				
			12.5	181	3.4~11.19	120~395				
EG 90	90	125	7.0	102	14.07 ~ 16.7	235 ~ 590	6096	2765	75	2830 x 1640 x 2125
			8.0	116	6.59 ~ 15.2	233 ~ 538				
			10.0	145	6.31 ~ 13.3	223 ~ 470				
EG 90P	90	125	7	102	6.68~17.05	236~602	7121	3230	76	2916 x 1884 x 1925
			8	116	6.65~15.66	235~553				
			9.5	138	6.46~13.45	228~475				
			12.5	181	5.64~11.86	199~419				
EG 90SP	90	125	7.0	102	7.5~17.84	265~630	7083	3213	76	2916 x 1884 x 1925
			8.0	116	8.13~17.13	287~605				
			10.0	145	7.87~14.87	278~525				
			12.5	181	6.94~11.78	245~416				
EG 110	110	150	7.0	102	7.87 ~ 19.9	278 ~ 701	6978	3165	75	2830 x 1640 x 2125
			8.0	116	7.75 ~ 18.4	274 ~ 649				
			10.0	145	7.75 ~ 16.4	274 ~ 580				
EG 110P	110	150	7	102	8.1~21.55	286~761	7496	3400	76	2916 x 1884 x 1925
			8	116	8.04~20.5	284~724				
			9.5	138	7.87~17.5	278~618				
			12.5	181	7.14~14.87	252~525				
EG 110SP	110	150	7.0	102	8.16~21.66	288~765	7696	3491	76	2916 x 1884 x 1925
			8.0	116	7.99~20.61	282~728				
			10.0	145	7.93~17.38	280~621				
			12.5	181	9.77~14.62	345~516				

## Technical Specifications - 50Hz Variable Speed

Model	Motor Power		Working Pressure		Free Air Delivery		Weight		Noise dB(A)	Dimensions L x B x H mm
	50Hz	kW	hp	bar g	psi g	m <sup>3</sup> /min	cfm	lbs		
EG 132	132	175	7.0	102	10.00 ~ 24.2	353 ~ 855	7639	3465	75	2830 x 1640 x 2125
			8.0	116	9.85 ~ 22.4	348 ~ 791				
			10.0	145	9.65 ~ 20.1	341 ~ 710				
EG 132P	132	175	7	102	10.48-26.51	370-936	9458	4290	76	2916 x 1884 x 1925
			8	116	10.34-24.35	365-860				
			9.5	138	10.45-21.52	369-760				
			12.5	181	7.59-17.53	268-619				
EG 160	160	200	7.0	102	11.60 ~ 29.1	411 ~ 1026	8422	3820	75	2830 x 1640 x 2125
			8.0	116	11.75 ~ 26.5	415 ~ 935				
			10.0	145	11.55 ~ 24.05	408 ~ 850				
EG 160P	160	200	7	102	12.71-30.81	449-1088	9568	4340	76	2916 x 1884 x 1925
			8	116	12.57-28.77	444-1016				
			9.5	138	12.49-25.71	441-908				
			12.5	181	9.85-21.44	348-757				
EG 200	200	250	4.5	65	15.4 ~ 38.51	544 ~ 1360	11949	5420	78	3490 x 2251 x 2441
			7.0	102	14.8 ~ 37.94	525 ~ 1340				
			8.0	116	14.7 ~ 34.48	520 ~ 1218				
			9.5	138	14.4 ~ 31.15	512 ~ 1100				
			12.5	181	12.57 ~ 25.77	444 ~ 910				
EG 250	250	300	4.5	65	17.4 ~ 43.6	614 ~ 1540	12743	5780	78	3490 x 2251 x 2441
			7.0	102	18.2 ~ 43.18	642 ~ 1525				
			8.0	116	18.0 ~ 41.77	635 ~ 1475				
			9.5	138	17.7 ~ 37.38	625 ~ 1320				
			12.5	181	15.34 ~ 31.15	542 ~ 1100				

## Technical Specifications - 60Hz Fixed Speed

Model	Motor Power		Working Pressure		Free Air Delivery		Weight		Noise dB(A)	Dimensions L x B x H in
	60Hz	kW	hp	bar g	psi g	m <sup>3</sup> /min	cfm	lbs		
EG 11	11	15	6.9	100	2.01	71	1213	550	69	56 x 32 x 58
			8.7	125	1.76	62				
			10.4	150	1.56	55				
			12.1	175	1.39	49				
EG 15	15	20	6.9	100	2.66	94	1257	570	69	56 x 32 x 58
			8.7	125	2.41	85				
			10.4	150	2.18	77				
			12.1	175	1.84	65				
EG 18	18	25	6.9	100	3.31	117	1411	640	69	56 x 32 x 58
			8.7	125	3.11	110				
			10.4	150	2.61	92				
			12.1	175	2.32	82				
EG 22	22	30	6.9	100	4.05	143	1433	650	69	56 x 32 x 58
			8.7	125	3.79	134				
			10.4	150	3.28	116				
			12.1	175	2.72	96				
EG 30	30	40	6.9	100	5.75	203	2401	1089	69	67 x 44 x 62
			8	115	5.18	183				
			8.7	125	5.04	178				
			10.4	150	4.33	153				
			12.1	175	3.85	136				
EG 37	37	50	6.9	100	7.02	248	2447	1110	69	67 x 44 x 62
			8	115	6.51	230				
			8.7	125	6.00	212				
			10.4	150	5.75	203				
			12.1	175	4.87	172				



## Technical Specifications - 60Hz Fixed Speed

Model	Motor Power		Working Pressure		Free Air Delivery		Weight		Noise	Dimensions L x B x H
	60Hz	kW	hp	bar g	psi g	m <sup>3</sup> /min	cfm	lbs	kg	dB(A)
EG 45	45	60	6.9	100	8.55	302	2453	1113	69	67 x 44 x 62
			8	115	7.82	276				
			8.7	125	7.56	267				
			10.4	150	6.51	230				
			12.1	175	5.89	208				
EG 55	55	75	6.9	100	10.62	375	3503	1588	69	77.1 x 49.7 x 69
			8	115	10.05	355				
			8.7	125	9.71	343				
			10.4	150	8.16	288				
			12.1	175	7.67	271				
EG 75	75	100	6.9	100	14.87	525	4674	2120	69	81.3 x 53.4 x 77.6
			8	115	13.73	485				
			8.7	125	12.97	458				
			10.4	150	12.03	425				
			12.1	175	11.04	390				
EG 90	90	125	6.9	100	17.10	604	6197	2811	75	111 x 65 x 84
			8	115	15.57	550				
			8.7	125	15.18	536				
			10.4	150	13.54	478				
			12.1	175	12.06	426				
EG 90P	90	120	6.9	100	17.42	615	6197	2811	75	114.8 x 74.2 x 75.8
			7.9	115	15.60	551				
			8.6	125	15.57	550				
			10.3	150	13.39	473				
			12.1	175	12.06	426				
EG 90SP	90	125	6.9	100	17.56	620	6945	3150	76	114.8 X 74.2 X 75.8
			7.9	115	17.19	607				
			8.6	125	16.42	580				
			10.3	150	14.72	520				
			12.1	175	12.40	438				
EG 110	110	150	6.9	100	20.39	720	6393	2900	75	111 x 65 x 84
			8	115	18.41	650				
			8.7	125	17.84	630				
			10.4	150	16.14	570				
			12.1	175	15.01	530				
EG 110P	110	150	6.9	100	21.55	761	6824	3095	76	114.8 x 74.2 x 75.8
			7.9	115	21.38	755				
			8.6	125	19.26	680				
			10.3	150	16.85	595				
			12.1	175	15.01	530				
EG 110SP	110	150	6.9	100	21.65	765	7210	3270	76	114.8 X 74.2 X 75.8
			7.9	115	20.61	728				
			8.6	125	19.37	684				
			10.3	150	16.85	595				
			12.1	175	14.02	495				
EG 132P**	132	175	6.9	100	26.17	924	8936	4053	76	114.8 x 74.2 x 75.8
			8.6	125	23.05	814				
			10.3	150	20.84	736				
			12.1	175	17.90	632				
			6.9	100	27.61	975				
EG 160	160	200	8	115	25.12	887	7840	3556	75	111 x 65 x 84
			8.7	125	24.07	850				
			10.4	150	22.03	778				
			6.9	100	29.76	1051				
			7.9	115	28.03	990				
EG 160P	160	200	8.6	125	26.05	920	8936	4053	76	114.8 x 74.2 x 75.8
			10.3	150	24.3	858				
			12.1	175	20.39	720				

## Technical Specifications - 60Hz Fixed Speed

Model	Motor Power		Working Pressure		Free Air Delivery		Weight		Noise dB(A)	Dimensions L x B x H in
	60Hz	kW	hp	bar g	psi g	m <sup>3</sup> /min	cfm	lbs		
EG200	200	250	6.9	100	36.10	1275	12586	5709	78	126 x 83 x 88
			8	115	33.47	1182				
			8.7	125	33.27	1175				
			10.4	150	28.32	1000				
EG 250	250	300	6.9	100	42.90	1515	12632	5730	78	126 x 83 x 88
			8	115	38.37	1355				
			8.7	125	38.23	1350				
			10.4	150	33.13	1170				

## Technical Specifications - 60Hz Variable Speed

Model	Motor Power		Working Pressure		Free Air Delivery		Weight		Noise dB(A)	Dimensions L x B x H in
	60Hz	kW	hp	bar g	psi g	m <sup>3</sup> /min	cfm	lbs		
EG 11PM	11	15	6.9	100	0.48-2.18	17-77	1283	582	69	53 x 28 x 54
			7.9	115	0.48-2.12	17-75				
			8.6	125	0.48-2.04	17-72				
			10.3	150	0.48-1.59	17-56				
			12.1	175	0.48-1.42	17-50				
EG15 PM	15	20	6.9	100	0.48-2.63	17-93	1283	582	69	53 x 28 x 54
			7.9	115	0.48-2.49	17-88				
			8.6	125	0.48-2.41	17-85				
			10.3	150	0.48-2.18	17-77				
EG18 PM	18	25	6.9	100	0.85-3.77	30-133	1477	670	69	59 x 32 x 54
			7.9	115	0.85-3.51	30-124				
			8.6	125	0.85-3.4	30-120				
			10.3	150	0.85-2.92	30-103	2401	1089	69	67 x 44 x 62
			12.1	175	0.85-2.55	30-90				
EG22 PM	22	30	6.9	100	0.85-4.19	30-148	1477	670	69	59 x 32 x 54
			7.9	115	0.85-4.08	30-144				
			8.6	125	0.85-3.96	30-140				
			10.3	150	0.85-3.48	30-123	2401	1089	69	67 x 44 x 62
			12.1	175	0.85-2.95	30-104				
EG30 PM	30	40	6.9	100	0.85-5.52	30-195	2401	1089	69	67 x 44 x 62
			7.9	115	0.85-5.1	30-180				
			8.6	125	0.85-4.81	30-170				
			10.3	150	0.85-4.64	30-164				
			12.1	175	0.85-3.79	30-134				
EG30x PM	30	40	6.9	100	1.7-6.03	60-213	2501	1135	69	67 x 44 x 62
			7.9	115	1.7-5.41	60-191				
			8.6	125	1.7-5.24	60-185				
			10.3	150	1.7-5.15	60-182				
			12.1	175	1.7-4.19	60-148				
EG37 PM	37	50	6.9	100	1.7-7.99	60-282	2501	1135	69	67 x 44 x 62
			7.9	115	1.7-7.87	60-278				
			8.6	125	1.7-7.36	60-260				
			10.3	150	1.7-6.2	60-219				
			12.1	175	1.7-5.32	60-188				
EG45 PM	45	60	6.9	100	1.7-8.75	60-309	2501	1135	69	67 x 44 x 62
			7.9	115	1.7-8.13	60-287				
			8.6	125	1.7-7.65	60-270				
			10.3	150	1.7-7.14	60-252				
			12.1	175	1.7-6.09	60-215				

## Technical Specifications - 60Hz Variable Speed

Model	Motor Power		Working Pressure		Free Air Delivery		Weight		Noise dB(A)	Dimensions L x B x H in
	60Hz	kW	hp	bar g	psi g	m <sup>3</sup> /min	cfm	lbs		
EG 55	55	75	6.9	100	2.19-10.62	77-375	3503	1588	69	77.1 x 49.7 x 69
			8	115	2.19-10.62	77-375				
			8.7	125	2.16-9.71	76-343				
			10.4	150	2.24-8.16	79-288				
			12.1	175	3.77-7.67	133-271				
EG 75	75	100	6.9	100	2.47-14.87	87-525	4829	2190	69	81.3 x 53.4 x 77.6
			8	115	2.44-13.73	86-485				
			8.7	125	2.44-12.97	86-458				
			10.4	150	2.7-12.03	95-425				
			12.1	175	4.22-11.04	149-390				
EG 90	90	125	6.9	100	6.66-17.1	235-604	6197	2811	75	111 x 65 x 84
			8	115	6.69-15.46	236-546				
			8.7	125	6.55-15.18	231-536				
			10.4	150	6.35-13.54	224-478				
EG 90P	90	125	6.9	100	6.94-17.33	245-612	6197	2811	75	114.8 x 74.2 x 75.8
			7.9	115	6.6-15.6	233-551				
			8.6	125	6.18-15.57	218-550				
			10.3	150	6.12-13.39	216-473				
			12.1	175	5.67-12.06	200-426				
EG 90SP	90	125	6.9	100	7.96-17.56	281-620	7041	3194	76	114.8 X 74.2 X 75.8
			7.9	115	7.28-17.19	257-607				
			8.6	125	7.96-16.42	281-580				
			10.3	150	7.90-14.72	279-520				
			12.1	175	6.94-12.37	245-437				
EG 110	110	150	6.9	100	7.85-20.39	277-720	6393	2900	75	111 x 65 x 84
			8	115	7.93-18.41	280-650				
			8.7	125	7.76-17.84	274-630				
			10.4	150	7.42-16.14	262-570				
EG 110P	110	150	6.9	100	7.88-21.55	278-761	6824	3095	76	114.8 x 74.2 x 75.8
			7.9	115	8.44-21.38	298-755				
			8.6	125	7.65-19.26	270-680				
			10.3	150	7.82-16.85	276-595				
			12.1	175	6.57-15.01	232-530				
EG 110SP	110	150	6.9	100	7.87-21.65	278-765	7314	3318	76	114.8 X 74.2 X 75.8
			7.9	115	8.10-20.59	286-727				
			8.6	125	7.31-19.37	258-684				
			10.3	150	9.17-16.85	324-595				
			12.1	175	9.54-14.24	337-503				
EG 132P**	132	175	6.9	100	8.84-26.17	312-924	8936	4053	76	114.8 x 74.2 x 75.8
			8.6	125	7.28-23.05	257-814				
			10.3	150	6.94-20.84	245-736				
			12.1	175	5.92-17.9	209-632				
EG 160	160	200	6.9	100	10.91-27.61	385-975	7840	3556	75	111 x 65 x 84
			8	115	10.79-25.12	381-887				
			8.7	125	10.85-24.07	383-850				
			10.4	150	10.68-22.03	377-778				
EG 160P	160	200	6.9	100	11.59-29.76	409-1051	8936	4053	76	114.8 x 74.2 x 75.8
			7.9	115	11.67-28.03	412-990				
			8.6	125	2.89-26.05	102-920				
			10.3	150	10.57-24.3	373-858				
			12.1	175	10.2-20.39	360-720				
EG 200	200	250	6.9	100	14.19-36.1	501-1275	12586	5709	78	126 x 83 x 88
			8	115	13.97-33.47	493-1182				
			8.7	125	14.33-33.27	506-1175				
			10.4	150	13.74-28.32	485-1000				
EG 250	250	300	6.9	100	17.39-42.9	614-1515	12632	5730	78	126 x 83 x 88
			8	115	15.98-38.37	564-1355				
			8.7	125	16.12-38.23	569-1350				
			10.4	150	15.86-33.13	560-1170				



# ELGi

Always Better.

Elgi Equipments Limited is a global air compressor manufacturer with a broad line of innovative and technologically superior compressed air systems.

ELGi has consistently worked towards ensuring that its customers achieve their productivity goals while keeping the cost of ownership low. ELGi offers a complete range of

compressed air solutions from oil lubricated and oil free rotary screw compressors, oil lubricated and oil free reciprocating compressors and centrifugal compressors, to dryers, filters, and downstream accessories.

The company's portfolio of over 400 products has found wide application across industries.

60+

Years of Customer-Centric Innovation

2 Mn+

Installations Worldwide

120+

Countries and Counting



**DEMING PRIZE**  
**2019**

AWARDED TO  
ELGI EQUIPMENTS LIMITED  
FOR OUTSTANDING MERIT  
IN THE STATISTICAL  
CONTROL OF QUALITY  
2019

ELGi is the first globally established industrial air compressor manufacturer to be awarded the Deming Prize for Excellence in Total Quality Management.

**ELGI**<sup>®</sup>  
Always Better.

